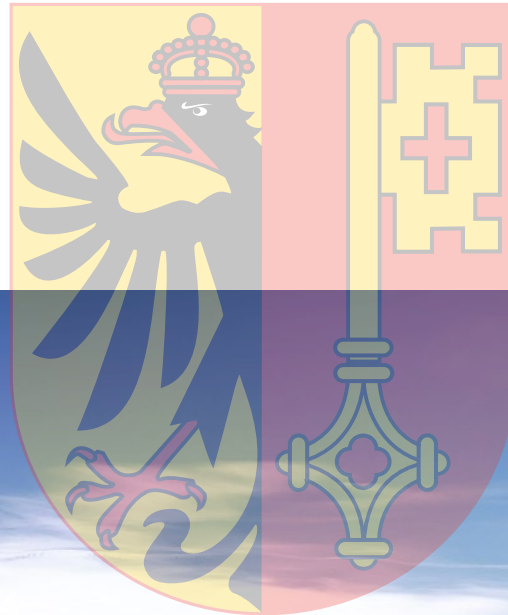


feeling at home

# Welcome to Geneva and Lausanne. Settling-In Tips and Useful Information.



LIBERTÉ  
ET  
PATRIE





# Table of Contents



BLAZON  
OF CANTON GENEVA



BLAZON  
OF CANTON VAUD

3	Switzerland and Lake Lemman Region
5	Geneva
9	Lausanne
12	Customs, Visas and Permits
14	Importing
16	Accommodation
21	Furniture Rental Services
22	Waste Disposal and Recycling System
23	Taxes
24	Cost of Living
27	Schooling and Education
31	Banking
33	Insurances
36	Medical
38	Post Office
39	Public Transport
41	Driving
44	Shopping
47	International Clubs and Societies
48	Places of Interest
51	Switzerland-wide Coverage by Prime Relocation

**PUBLISHER** PRIME RELOCATION GMBH  
**CONCEPT & DESIGN** ANDRES GYSSLER  
**PRODUCER** PRINTIMO AG

# Switzerland and Lake Lemman Region

Switzerland consists of 26 cantons and is proud of its four official languages: German, French, Italian and Romansch. Switzerland is split into different linguistic areas, such as the French area (the south), the German area which is mostly the north



and the Italian area, which is the south east. Romansch is spoken in the south eastern Canton of Graubünden only.

### Climate and seasons

The seasons in Switzerland are very well defined. In spring (March to May) you can witness the trees blossoming and the meadows turning green. Expect cold days during spring time too. In summer, air temperatures reach between 25 to 35 and the water temperature of the lake between 19 to 23 degrees, which is perfect for swimming. Due to several heatwave periods, summers in Lausanne and Geneva can be surprisingly hot sometimes!

From September to November, autumn shows itself through the leaves changing colours and falling off the trees. The weather can be cloudy or foggy for a few days. In winter, it snows up in the mountains but rarely downtown. Temperatures are usually around 5 degrees.

**The Lake Lemman Region** (Geneva and Lausanne) Inhabited since the Neolithic Age, the Lake Lemman Area was colonised by the Romans who founded Avenches, the Helvetic capital. The region became part of the Holy Roman Empire of the German Nation in 1302. Under the domination of Berne, the Lake Lemman Area adopted the Reformation in 1536 and welcomed Protestant refugees, particularly the French Huguenots, who encouraged the

development of the region. Following Napoleon I's conquest, the Lake Lemman area joined the Swiss Confederation in 1803.

Many outstanding personalities come from the Lake Lemman Region: Henri Nestlé, the inventor of baby powder milk and François-Louis Cailler, the inventor of milk chocolate. Also, celebrities have chosen the Lake Geneva Region as their residence, such as Napoleon III, Ernest Hemingway, Coco Chanel, Charlie Chaplin, Audrey Hepburn, and Michael Schumacher.

LAKE LEMAN  
AT THE HEIGHT OF  
SAINT-SAPHORIN  
CANTON VAUD



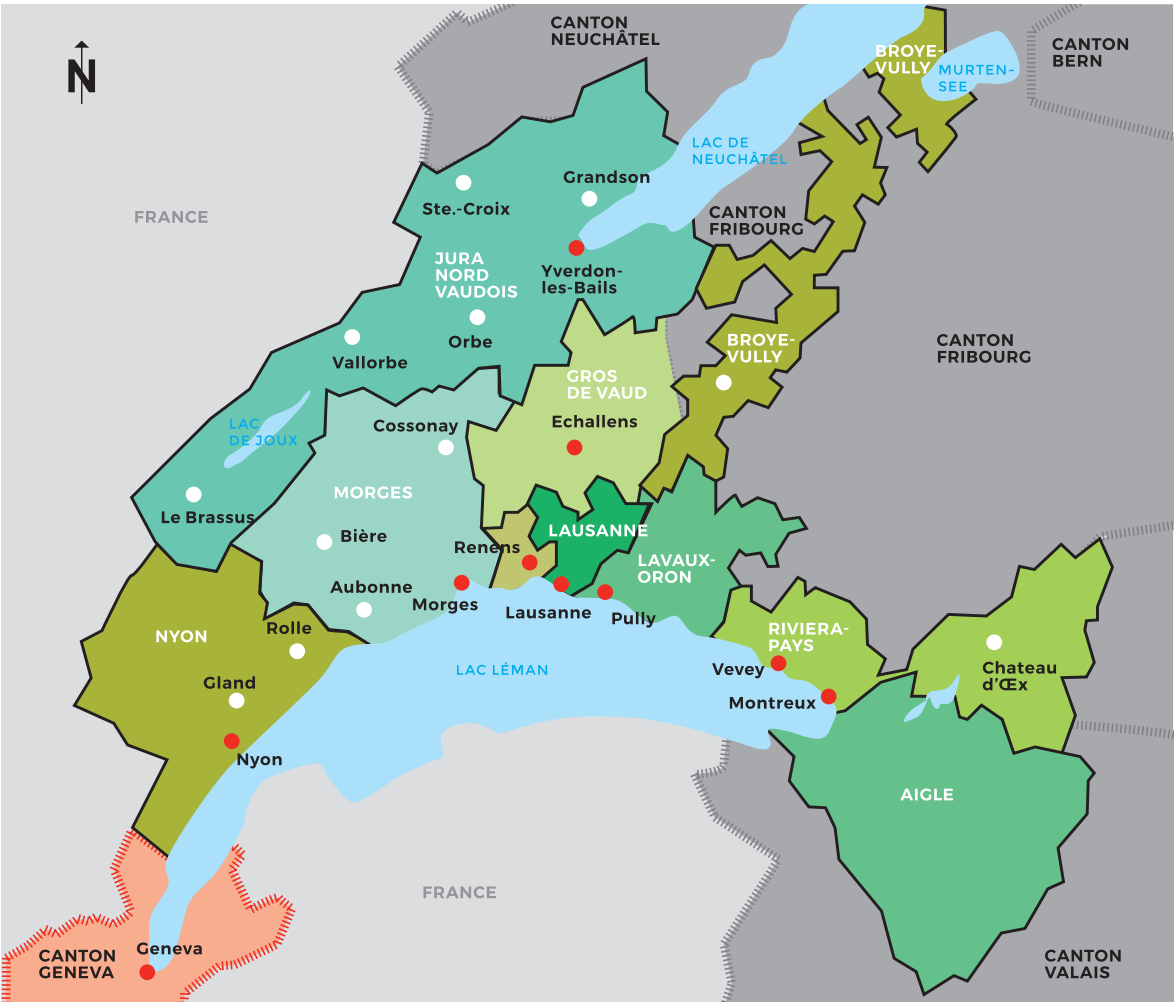
PALAIS DE JUSTICE  
LAUSANNE



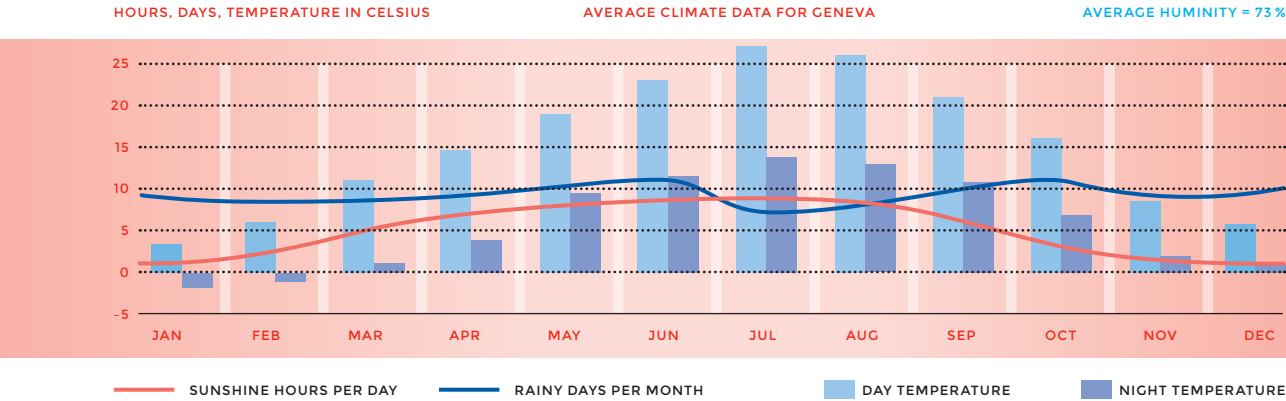
# Switzerland and Lake Lemman Region

Lake Lemman (180 km circumference) is the largest freshwater lake in western Europe and certainly the most romantic one, having inspired countless artists. Located in an exceptional and natural setting, it captivates the eyes. It is an immense stretch of water that changes colour with the passing of time. It is surrounded by the terraced

vineyards of La Côte and Lavaux on one and the Alps on the other side. It is the place for perfect summer appointments as well as sport competitions (famous international regattas, longest rowing contest of 160 km). Lake Lemman is also the habitat of around 30 species of fishes.



# Geneva



USEFUL LINKS

[GENEVE.COM](#)

[MYSWITZERLAND.COM](#)

## Welcome to Geneva

Geneva is an international and vibrant city, rich in culture and history. It is no wonder that it's the home to thousands of expats (40% of the population is composed by foreigners) and the destination of hundreds of visitors annually. Geneva is famous for its international life, with the second UN world outpost, as well as numerous NGOs (around 200) such as, amongst other key organizations, the WHO-World Health Organization, WMO-World Meteorological Organization, WIPO-World Intellectual Property Organization. Geneva is one

of the main cities of world congress, it welcomes great exchanges thanks to its open-minded spirit and perception. Due to its geographical position, it has the privilege of being in the heart of Europe and close to cities such as London, Barcelona, Rome, Milan and Amsterdam.

THE CATHEDRAL OF ST. PETER IS A LANDMARK OF THE CITY OF GENEVA. THE FRENCH REFORMER JOHANNES CALVIN GAVE HIS SERMONS HERE IN THE 16TH CENTURY.

## SOME FACTS AND FIGURES ABOUT GENEVA

- SECOND LARGEST CITY IN SWITZERLAND AFTER ZURICH
- SECOND-LARGEST FINANCIAL CENTRE AFTER ZURICH
- ALTITUDE: 375 M ABOVE SEA LEVEL
- PERCENTAGE OF FOREIGNERS: 47.8 PERCENT (31 DEC., 2018)
- IN 2018, 18.6% OF THE POPULATION WERE MILLIONAIRES
- CITY OF GENEVA IS THE HOME TO INTERNATIONAL ORGANISATIONS: UN, CERN, ICRC, WHO, ILO, IOM, ISO, IEC, ITU, WIPO, WMO, WOSM AND WTO
- GENEVA HOSTS THE HIGHEST NUMBER OF INTERNATIONAL ORGANISATIONS IN THE WORLD
- 1863 THE INTERNATIONAL COMMITTEE OF THE RED CROSS WAS FOUNDED IN GENEVA
- GENEVA WAS SEVERAL TIMES RANKED AMONG THE 10 MOST LIVEABLE CITIES IN THE WORLD

The European Organization for Nuclear Research, CERN, is also located in the canton and is one of the world's largest and most respected Centre for scientific research. Geneva is also recognised for its dynamic export economy which is mainly driven by the banking, watch and services industry.

## Population

Geneva has a population of around 203,000 and the whole Canton of Geneva just over 506,000 inhabitants.





# Geneva

## Area Guide to Geneva

### The left Bank

The left bank is considered as a residential area with some upscale neighbourhoods and all the accessibility of the city centre, combined

with parks as well as restaurants, cafés and all shopping amenities. Residents consist of largely families, educated locals, and expats. Properties on the left bank are often more expensive, but usually slightly larger than the ones in the city centre. **Cologny and Vandoeuvres** are known as Geneva's Mini Beverly Hills and residential, upscale neighbourhood.

**Old Town** – beautifully restored neighbourhood from 16th century around Saint-Pierre's Cathedral, in the historical heart of Geneva.

**Eaux Vives** – young, very lively, multinational, restaurants, shops, parks, close to lake, buses and trams.

**Geneva beach** – several outdoor pools and supervised swimming in the Lake Lemman, open from mid-May to mid-September.

**Parc des Eaux-Vives**, Orangerie & Parc La Grange – beautiful view of the lake while enjoying French cuisine in the restaurant.

**Jet d'Eau Fountain** Geneva's famous landmark where 500 litres (132 gallons) of water per second are jetted to an altitude of 140 meters (459 feet).

**Place Neuve, Bastions** – the cultural heart of Geneva, opera, theatre, museums, university, shops and restaurants.

### The right bank

Famous for its "Bains des Paquis" with free concerts at sunrise in summer time and year-round out-of-the-ordinary lunch or dinner. View over Mont Blanc.

**Cointrin-Airport, Grand / Petit-Saconnex** – United Nations, Red Cross and numerous international organisations' headquarters, favoured by UN and international employees working on the right bank.

**Paquis** – close to the lake front and railway station Cornavin, very busy and animated multi-cultural, eclectic neighbourhood with shops, bars, red-light district, cinemas and restaurants, lower (in the upper part) to middle and upper range (closer to the lake) flats.

**The Brunswick Monument** mausoleum built in 1879, to honour one of Geneva's biggest "bien-faiteurs", Charles II de Brunswick and the Cottage, a small bistro of a lovely setting, just behind it.

**The Palais Wilson** building next to the hotel President Wilson, was originally built 1873 as the hotel in honour of the co-founder of the League of Nations, US President Wilson. The hotel was later renovated for government purposes (Seat of League of Nations until these were transferred to Palais des Nations) and is now the seat of the UN offices for Human Rights.

**Pont du Mont Blanc** – Terminals for boat cruises and tourist train tours on both sides of Geneva's main bridge across the Rhône river.

**Bergues** – busy neighbourhood along the quay of Rhône River, shops, restaurants.

**Pregny, Chambésy, Bellevue, Genthod, Collex** residential, in large part subject to noise from aircraft, trains and roads.

**Versoix** – with 13,450 inhabitants the last municipality on the right bank, in the canton of Geneva before the canton of Vaud starts. The distance from downtown Geneva is about 10 km and while the train will take you into the Centre in about 12 minutes, it can take you around 30 minutes by car depending on traffic.

**Countryside** (right-left-south)

**Meyrin, Vernier** – suburban, largely industrialised, subject to noise from aircraft, lower to middle range flats and villas.

In the area: **CERN** – European Nuclear Research – operates the largest particle physics laboratory in the world.

**Satigny, Russin, Dardagny (Mandement Area)** – traditional picturesque villages in the wine-growing area, Satigny being the village with largest surface of vineyards in French-speaking Switzerland. Commute by regional local train – takes you into Geneva Central Station within 10-15 min.

**Veyrier, Vessy, Pinchat, Troinex, Bardonnex** – residential neighbourhood, family oriented.

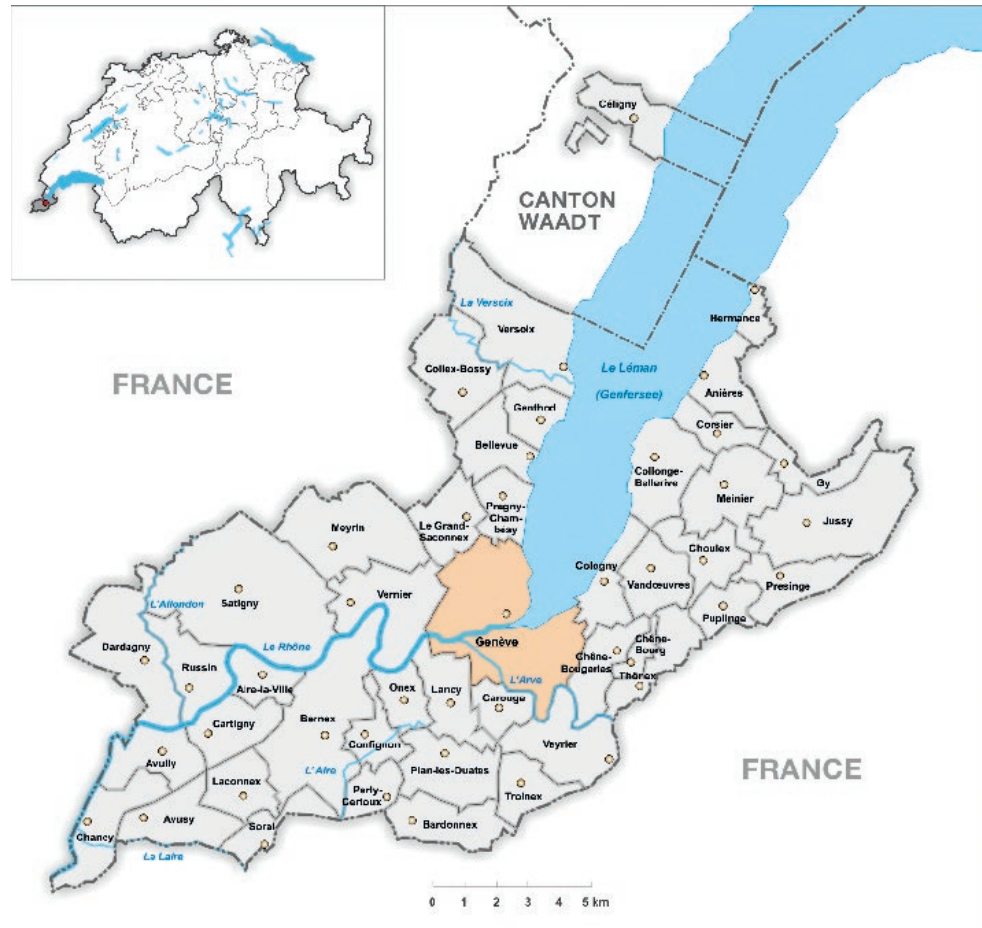
**Cartigny, Chouilly, Laconnex, Lully, Soral** – small villages on remote countryside and vineyards.

**Saconnex d'Arve, Onex, Bernex, Aire-la-Ville, Confignon** – residential neighbourhood, village character, family-orientated.



BOUCHONS VAUDOIS  
THE TRADITIONAL BISCUITS IN  
THE SHAPE OF WINE CORKS.  
EXCLUSIVELY PRODUCED  
BY THE "SOCIÉTÉ VAUDOISE  
ET ROMANDE DES PATRONS  
PÂTISSIERS-CONFISEURS,  
CHOCOLATIERS, GLACIERS".

GENEVA IS SEPARATED BY  
TWO BANKS RIGHT/LEFT AS  
PER THE FLOW OF THE RIVER  
(ON THE MAP THE LEFT  
BANK IS ON THE RIGHT FOR  
EXAMPLE).



MAP OF THE CANTON GENEVA



# Geneva

**Petit-Lancy, Grand-Lancy, Plan-les-Ouates** – sub-urban, multiple headquarters and offices, trams and buses, mixed area of villas and flats.

**Carouge** is Geneva’s “Greenwich village”, friendly atmosphere with small old houses lining the streets. Lively neighbourhood with restaurants and shops centered around the old market. Trendy district rising in popularity especially amongst the youth.

**Acacias** – neighbourhood with multiple head-quarters and offices, dealerships, trams, close to Carouge.

**Le Salève** – despite its reputation as “Geneva’s mountain”, the Salève is located entirely on French soil. To get a splendid view of Lake Lemman and Mont Blanc, you can take the cable car up to its peak. With its 1380 m altitude and well mapped walking routes, it is a great destination for hiking, climbing and paragliding in the summer and sledding and beginner skiing in the winter.



THE JET D'EAU. INITIALLY A RELIEF VALVE FOR A HYDROELECTRIC POWER STATION, IT BECAME A LANDMARK IN GENEVA. PHOTO: MYSWITZERLAND.CH



ALINGHI YACHT FROM THE “SOCIÉTÉ NAUTIQUE DE GENÈVE” WON THE MOST PRESTIGIOUS SAILING RACE, AMERICA’S CUP, IN 2007.

# Lausanne

## Welcome to Lausanne

Lausanne is a city on the northern shores of Lake Lemman, in the canton of Vaud (French part). It offers its residents a quality of life that enjoys the same high-level recognition worldwide among international companies for its cultural, educational and research institutions. Lausanne is considered as the Swiss “San Francisco”. It is close to nature and you can easily reach the picturesque vineyards of the Lavaux area by public transport. The public transport system is very well-connected, you can use the subway (the only one in Switzerland!) to reach the lakeside. The city is very active and lively. Even if Lausanne is a manageable city, you can compare it with the big cities thanks to its incredibly dynamic cultural scene, with theatres, museums, dance companies and internationally renowned festivals. Night-life is very popular with lots of bars and restaurants. The young and dynamic feeling is due to the presence of one of the world’s renowned polytechnical schools, the EPFL-Ecole Polytechnique Fédérale, as well as the Lausanne University both adjacent on a luxuriant, multi-acre countryside campus on the outskirts of the town.

Lausanne is also home of IMD, born from business executives for business executives, IMD is independent and combines the best of academia and business. As one of the world leaders in executive education, IMD stands out as a pioneer in corporate leadership development, strategy and digital transformation.

LAUSANNE CITYSCAPE PHOTO: MYSWITZERLAND.CH

The International Olympic Committee headquarters as well as the Olympic Museum and also the Federal Supreme Court (the highest court in Switzerland) are based in Lausanne. Away from the lake, the hilly old city has medieval, shop-lined streets and a 12th-century Gothic cathedral with an ornate façade. Around the cathedral lies Lausanne’s old town with the St-Maire castle, built between 1397 and 1427, and the 17th century town hall.

## Population

Lausanne has a population of around 137,000 people (which makes it to the 4th biggest city after Zurich, Geneva and Basel).



## SOME FACTS AND FIGURES ABOUT LAUSANNE

- LAUSANNE IS THE CAPITAL OF THE CANTON OF VAUD
- POPULATION: 139,111 (IN 2018)
- THE ROMANS BUILT A MILITARY CAMP, WHICH THEY CALLED LOUSANNA . BY 400 AD, IT WAS NAMED CIVITAS LAUSANNA.
- COMPANIES WITH INTERNATIONAL IMPORTANCE ARE: THE FOOD COMPANY NESTLÉ , HARDWARE MANUFACTURER LOGITECH, THE CIGARETTE COMPANY PHILIP MORRIS INTERNATIONAL, SECURITY SYSTEMS KUDELSKI
- THE FIRST HIGHWAY IN SWITZERLAND WAS THE GENEVA-LAUSANNE LINE

## USEFUL LINKS

LAUSANNE-TOURISME.CH  
MYSWITZERLAND.COM



# Lausanne

**Ouchy** is the main part of Lausanne when it comes to lakeside. It offers lots of walks, plenty of cafés to enjoy and is undeniably a tourist attraction.

**Vidy** next to Ouchy is the place for outdoor sports (football fields, skatepark, beach volleyball, tennis courts, etc.). There is also the biggest swimming pool of Lausanne with access to the lake “Piscine de Bellerive” as well as several free beaches with large green areas (perfect for a BBQ).

## Lausanne City

Place Saint-Francois is the beating heart of the public transport where you can find various buses that go all over the city.

The Flon used to be an old industrial district back in the day but has been renovated and transformed into the trendiest place for the youth in Lausanne. Home for bars and restaurants, night clubs, shops and movies.

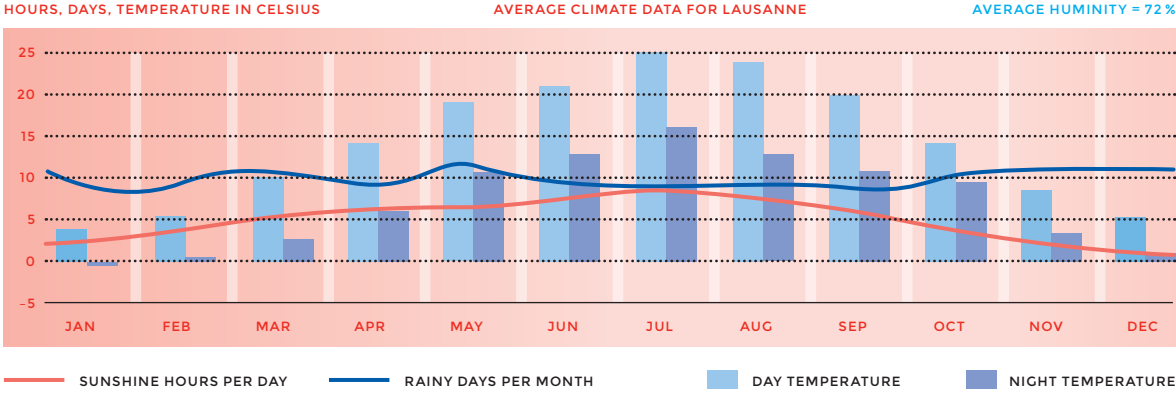
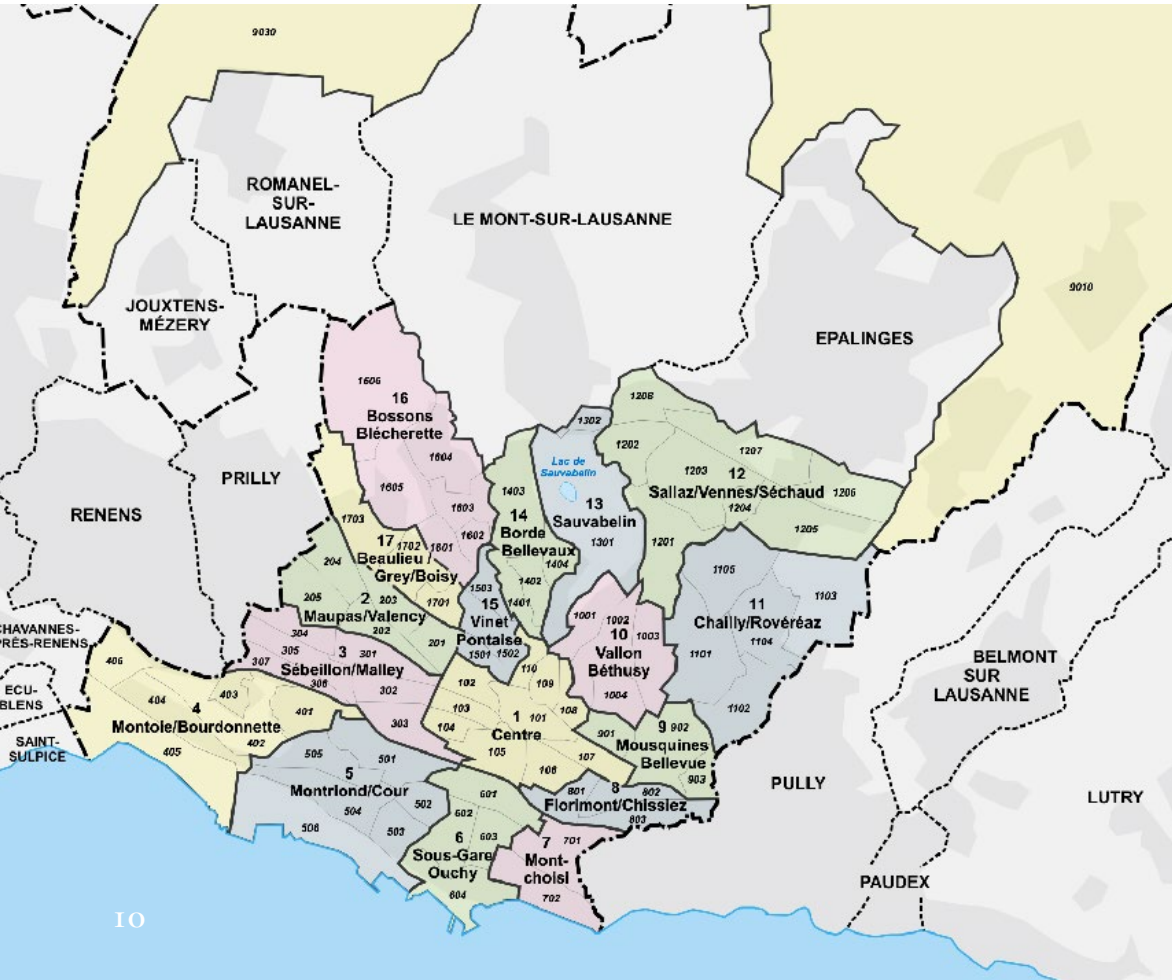
The old town of Lausanne offers a lovely promenade in the old streets as well as a visit through the Cathedral.

On the **East side** of Lausanne (considered as the little “Beverly Hills”), you will more likely find residential areas, such as Pully, Lutry, Belmont etc. Small buildings no higher than 3 to 4 levels and individual properties.

The **West side** of Lausanne is more considered as “industrial” but still with lots of choices to move in.

Prices may differ quite a lot between one side and to the other.

LAUSANNE  
NEIGHBOURHOODS AND  
MUNICIPALITIES.



LAUSANNE DOWNTOWN WITH  
THE BRIDGE PONT BESSIERES AND  
THE IOC BUILDING.



TRANSPORT MAP OF LAUSANNE  
ON THE WORLD MAP.COM





# Customs, Visas and Permits

USEFUL LINKS SWITZERLAND

SWISS CUSTOMS  
ZOLL.ADMIN.CH

FEDERAL DEPARTMENT OF  
FOREIGN AFFAIRS FDFA  
EDA.ADMIN.CH/EDA/EN/FDFA.  
HTML



OLD CITY HALL, LAUSANNE

## Customs, Visas and Permits

### Customs regulations

Here is some important information regarding Swiss customs. When importing goods from abroad, the duty-free limit is CHF 300 on the net value of your shopping. If it exceeds this amount then it is mandatory to pay the duty. It is forbidden to sum up the duty free amount together with other people. If you buy goods in euros and then bring your goods into Switzerland, you can get your foreign VAT refunded, make sure the sales person provides you with a form for a refund, which you can show at the border customs.

### Visas and permit documents

To live and work in Switzerland, you require a residency permit, issued by the local cantonal authorities. For long-term assignments, it is advisable to bring important original documents with you, such as birth certificates, marriage certificates, insurance policies, medical prescriptions, employment information and entry permits. A number of passport-size photos for the whole family are also useful. Since some permits have to be applied for from your home country, you should start this process well in advance of your move to Switzerland. For many, the Swiss immigration laws are complex and confusing. In 2002 a new bilateral agreement between Switzerland and the EU has considerably changed the laws on work and residence permits. This means that the immigration rules for the EU and EFTA States citizens are now easier and for non-EU citizens, things have become more challenging.

### EU and non-EU citizens' rights

As an EU citizen you have the right to settle in Switzerland and set up your own business, provided that you do so assuming full responsibility and at your own risk. Spouses and children under 21 may also settle and work in Switzerland as may other direct relatives. Non-EU nationals can only get a Swiss work permit if their future employer proves there is no Swiss, EU or EFTA state national available to do the job. As a rule, qualified, indispensable management staff are permitted to enter the country.

### Registration at the local district office

Registration needs to be completed within 14 days at the local district office as soon as you move into your house or apartment. The following documents are required when you do so:

- an employment contract
- a tenancy agreement for your new apartment
- valid identity documents or passport
- two passport photos
- civil status documents such as a family booklet and marriage certificate, birth certificates of children
- form to complete (individual for every municipality)

MUSÉE ARIANA, GENEVA



### Driving licence

It is also advisable to arrange a Swiss driving licence as soon as possible, although you have a maximum of one year in which to do so. The following documents are required to change your driving licence:

- Application form (this can be downloaded from the website of the responsible Road Traffic Office)
- Original copy of a valid driving licence
- Residence permit (if your residence permit is in card format, your residence certificate is also required)
- A passport photo
- Certificate from an ophthalmologist
- For the driving licence classes C1, C, D, D1 or BPT and for class 3 you also require a medical certificate

The fee to change your driving licence is depending on your canton, the price range is between CHF 80 and CHF 140.



### Geneva's City Hall

- Office Cantonal de la Population (only one place for all of the canton of Geneva state)  
Route de Chancy 88, 1213 Onex
- Invitation for biometry requested
- On appointment only

### Lausanne's City Hall

Commune de Lausanne >> for newcomers  
Rue du Port Franc 18, 1002 Lausanne  
(be aware each district and town has its own city hall in Canton Vaud)

### Biometry

- Voie du Chariot 3, 1014 Lausanne
- Invitation requested (usually transferee receives it once visa approved)
  - On appointment only

USEFUL LINKS GENEVA

CHANGE OF DRIVING LICENCE  
GE.CH/ORGANISATION/OFFICE-  
CANTONAL-VEHICULES-OCV

REQUEST DOCUMENTS  
GE.CH

REQUEST BIOMETRY  
GE.CH/ORGANISATION/OFFICE-  
CANTONAL-POPULATION-  
MIGRATIONS-OCPM BIOMETRY

USEFUL LINKS LAUSANNE &  
CANTON OF VAUD

CHANGE OF DRIVING LICENCE  
VD.CH/THEMES/MOBILITE/  
AUTOMOBILE

REQUEST DOCUMENTS  
LAUSANNE.CH

REQUEST BIOMETRY  
FLON.CH

LAUSANNE DOWNTOWN  
'PLACE DE L'EUROPE'



# Importing

## Cars

In most cases, you can import your car into Switzerland tax-free as part of your move if you have owned/used it for the last 6 months prior to your own official entry date in Switzerland. Foreign licence plates may be used for up to one year after your arrival but provided that your foreign insurance keeps being valid. At the time of importation, present the completed application form (18.44 Household Effects) to the customs office for importation. Once the car is imported, you need to register it at your local car authority office.

### Importing from an non-EU country

If you are considering importing your car from outside Europe, it's important to get all the information first. It can be costly and complicated, and your current vehicle may not even be adapted for Swiss road conditions.

### Importing from an EU country

If you are bringing your car from a country within Europe, you can simply drive the car across borders into Switzerland. However, official car import to Switzerland involves several steps and considerable paperwork.

In both cases **Autociel** is happy to assist you as follows:

#### Step 1

Once you get in touch with us, we provide a quote that includes the cost of importing and registering the car under Swiss license plates.

#### Step 2

Once you have submitted all your details, our experts investigate further and explore whether your car is eligible for tax free import.

#### Step 3

In the next step, we order all required paperwork for the car.

#### Step 4

If the car is less than 6 months old, we arrange for a reduced CO2 fee, that benefits you further.

#### Step 5

With all the paperwork in order, we organise the import process.

#### Step 6

We help you in getting an advantageous insurance quote from our partner for insurance.

#### Step 7

Finally, we arrange the compulsory car testing by the government, get the car registered under Swiss license plates and deliver it to you, key in hand, ready to drive.

### Things to keep in mind

#### Right Hand Drive (RHD)

If you are moving from the UK, chances are that your car is a Right-Hand Drive (RHD). Please note that it is difficult to drive a RHD car in Switzerland and quite often the expatriates do not get used to it. If this is the case with you, please note, there is almost no market for a RHD car here in Switzerland. In most instances, you need to re-import it to UK, in order to sell it. This is not the easiest thing! Therefore, we do not recommend to import your RHD car to Switzerland.

#### Insurance cover

If you qualify to import your car tax-free as a moving good (you have owned the car for more than 6 months), you have 12 months to register

your car under Swiss license plates, post your arrival in Switzerland. However, be careful, often the insurance company in your homeland does not cover your car in Switzerland. So, it is important for you to check with your insurance company whether they offer any cover in Switzerland once you settle in and if yes, then for how long they do so. Note that 99% of None-EU insurance companies (US, Canadian...) will refuse to cover your car in Switzerland or even in the EU. This means, it is wise to register it as soon as you arrive here.

#### Satellite navigation

Often the SatNav fails to work properly or not at all in Switzerland. While it is possible to update it, this can be extremely complicated and costly. We recommend using a Tom Tom if your system does not work properly in Switzerland.

#### Radio frequencies

If you are importing your car from outside of Europe, chances are only 50% all radio frequencies will work in Switzerland.

#### Servicing and repairing

As American cars are different from those in Europe, even those manufactured by European brands, there might be difficulties in servicing and repairing them in Switzerland, as well as in reselling them. We normally recommend selling them at 20% under the market price for comparable cars in Switzerland.

## Contact Autociel

Since 2002, **Autociel** is the independent car expert in Switzerland. If you need help with your car or to get one, you may contact us directly through **jerome.chessex@autociel.ch** and have a look at our website **www.autociel.ch/expat/** for more information.

## Pets

Since 2007, it has been compulsory for all dogs to be registered in the ANIS database and they must be microchipped. The Animal Identity Service (ANIS) operates throughout Switzerland and provides an independent database for pets. Within 10 days of your arrival in Switzerland imported dogs must be brought to a veterinary doctor. The vet takes care of registration with the ANIS (including microchip or tattoo number) and conducts a medical check-up of your pet. If you change address within Switzerland, you must inform ANIS about it. In addition, pets must have an international health certificate verifying that they have been vaccinated against rabies.

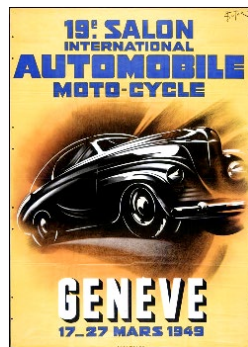
### Your dog also needs to be registered with your community and will receive a tag.

Your dog needs to be insured under your liability insurance. Check with your private insurance provider to make sure pet insurance is part of the package. If you plan to take your pet on trips to neighbouring countries, make sure to get an EU Pet Passport, which is required for pets travelling between EU countries.

Some dogs are not accepted in Switzerland or certain cantons. To be checked with the local authorities.



THE MOST FAMOUS DOG IN SWITZERLAND "BARRY". ACCORDING TO A LEGEND, HE HELPED TO SAVE OVER 40 HUMAN LIVES.



THE ANNUAL GENEVA INTERNATIONAL MOTOR SHOW, FIRST HELD IN 1905.



# Accommodation

Accommodation in Switzerland can be hard to find and expensive, especially when compared to other European countries. The cantons of Geneva, Zug and Zürich have the highest rental prices in Switzerland. The rental system here can appear complicated and it is advisable to have someone on your side to advise you of your rights and to represent you towards the local landlord and agents.

### Areas in and around Geneva

Properties in Geneva can often be smaller than many foreigners are accustomed to, and due to the competitive nature of the housing market, finding housing within the city can be a challenge. One should be aware that expectations might have to be adjusted since spacious properties with parking spaces and gardens are rarely obtainable in the city. For this reason, some might prefer to live in the countryside or villages with good access to the city.

When a rental property has been secured, a rental agreement will need to be signed which will lay out the conditions of the rental period. Usually, rental

properties are available for a minimum length of a year for a flat and up to 3 years for a house. The rental agreement will define the conditions, the duration of the rental, the date of rental amount adjustment as well as the expectations regarding property maintenance. Three months' rent deposit is also requested before the entry inspection either on a blocked account with a Swiss bank or with an insurance caution (Firste Caution - Smart Caution - Swiss Caution).

### Areas in and around Lausanne

The closer you are to the city centre or in trendy/ popular area, the more expensive it will be. Public transport, shops and everything nearby is obviously a big plus where you live. The east side of Lausanne such as Chailly, Pully, Lutry are also expensive due to its residential neighbourhood and lake views as standard.

A very popular and requested area in Lausanne is the district below the station. Close to the lake and downtown with Hausmannian type of buildings, demand is very high.

Linked to Lausanne are some suburbs like “Le Mont sur Lausanne”, “Romanel”, “Epalinges”, “Jouxtenz-mezerly”, which are typically districts with houses and families.

Especially in Geneva and Lausanne there are a lot of false advertisements, due to the great demand for apartments.

### Fraud alert on property portals:

- Never transfer money blind
- Never give away your personal details or passwords
- If too good to be true, be extra cautious
- Viewings are important, hence if not possible, it might be suspicious
- Always check who the landlord or real estate agency is (if the person or agency is abroad please be careful)
- Use your common sense

### What you can find

Houses are hard to find as they are in short supply; it is more common to find apartments with balconies and terraced apartments with large terraced balconies. When applying for a place, you rarely deal with the actual owner, more commonly a real estate agent will be coordinating the rental/ purchase. Expats mostly decide to rent properties first and buy later. In fact, 75% of the Swiss live in rented accommodation and are not home owners. Apartments are usually let unfurnished, but they come with complete kitchens, including a dishwasher, oven and stove. Washing machines and tumble dryers are available for common



### Description of Housing - how to count the rooms

#### 2 or 2.5 rooms

Geneva: 1 sitting-bedroom area (not separated) + 1 kitchen + 1 bathroom  
Vaud: 1 sitting room + 1 separated bedroom + 1 kitchen + 1 bathroom

#### 3 or 3.5 rooms

Geneva: 1 sitting area + 1 separated bedroom + 1 kitchen + 1 bathroom  
Vaud: 1 sitting area + 2 bedrooms + 1 kitchen & often 2 bathrooms

#### 4 or 4.5 rooms

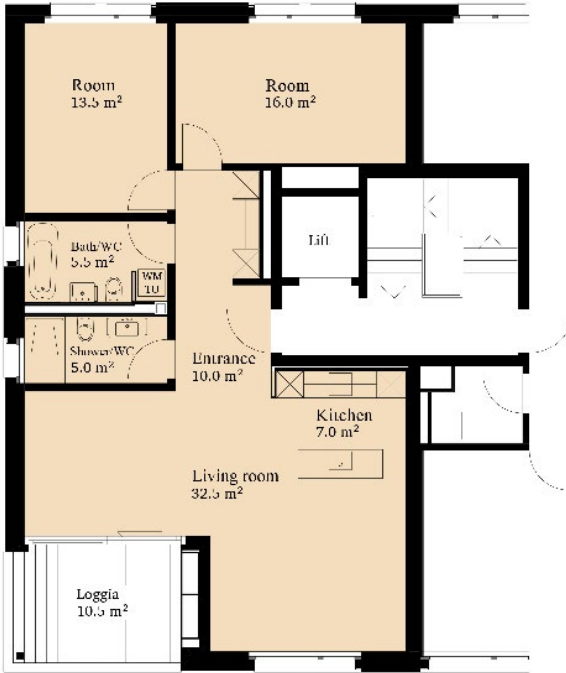
Geneva: 1 sitting area + 2 bedrooms + 1 kitchen + 1 bathroom  
Vaud: 1 sitting area + 3 bedrooms + 1 kitchen + 2 bathrooms

#### 5 or 5.5 rooms

Geneva: 1 sitting area + 3 bedrooms + 1 kitchen + 2 bathrooms  
Vaud: 1 sitting area + 4 bedrooms + 1 kitchen + 2 bathrooms

#### 6 or 6.5 rooms

Geneva: 1 sitting area + 4 bedrooms + 1 kitchen + 2 bathrooms  
Vaud: none



LAUSANNE  
OLD TOWN





# Accommodation

share and sometimes apartments are equipped with their own washing machines. Furnished accommodation is more difficult to find and is expensive. Properties in Switzerland never come with curtains or light fittings, which need to be purchased by the tenant. They do, however, come fitted with shutters and/or blinds.

### Electricity

The electric current in Switzerland is AC 220 – 240 volts, frequency 50 Hz. If you are coming from the States, you will require a step-down transformer, which can be purchased at an electrical store, but it is advisable to leave your US appliances at home and buy new ones here for safety reasons. Most sockets are for two-pin plugs.

### How to rent a property

Making a good impression with the application form is essential, if you like to be in the running for getting an offer of your wished apartment. When deciding for an apartment, you will need to be quick and flexible as to when you would like to begin the lease, because if you aren't flexible the next candidate will be. Leases are usually open ended but one year minimum and a deposit of 3 months rent has to be paid into a security holding account before you can get the keys, as does the first months' rent, so please be prepared for this. The deposit amount will be refunded back to you along with any accrued interest at the end of the rental period. The cost for possible damage in the apartment will be deducted.

### General House Rules in Switzerland

#### Consideration

In order to establish a good consensus among all tenants, everybody is committed to mutual consideration. Every member of the household is to follow the house rules, which you will receive from the landlord / agency in writing.

#### Noise

Noise is to be avoided, especially at night. Playing musical instruments is not allowed before 8am and after 10pm. Noise should be kept to a minimum so as not to disturb others. Do not mow the lawn during lunch and dinner times as well as after 5pm on Saturdays and all day Sundays and public holidays. In some apartment blocks washing is not permitted on Sundays because of the noise created by the washing machines.

#### Cleanliness

Tenants are asked to keep the stairs, entrance and other common rooms free of obstacles and tidy. Unless a caretaker is in charge of the cleaning of common areas such as staircase, cellar aisles, the tenants should take care of it themselves. Each tenant should clean his/her part of the staircase (including windows). The clearing of snow is to be carried out by the tenants on a weekly basis. Tenants of garage or parking spaces are to clean the garage area and need to clear the snow to one side. Rubbish bags are to be properly tied and put in the bins provided. Bikes, mopeds, prams, children's bicycles, etc., need to be stored in the designated areas.

### Common shared rooms

Unless arranged otherwise, laundry rooms and their appliances are to be used according to a schedule provided by the landlord. Each tenant is entitled to sole use of such rooms during the appointed times (Usually on weekdays between 7am and 10pm). After use, the rooms and appliances are to be cleaned. The laundry should be dried in the designated areas such as a laundry room, drying room or outside.

### Heating

During the heating period, no heating in any room is to be turned off completely. The living room and other rooms are to be aired only briefly (10 minutes a day). Cellar and attic windows must be closed if temperatures fall to below freezing point. In apartments with floor heating only suitable carpets are to be installed, otherwise the landlord will not take responsibility for insufficient heating.

### Miscellaneous

The main door of the apartment block is to remain locked after 8pm unless otherwise specified.

Security regulations displayed in the lifts are to be observed. Any operational disorders are to be reported immediately to the caretaker or landlord. The lift is to be handled with the necessary care.

Sun blinds and shutters are not to remain extended during wind and heavy rain. Their permanent extension during longer periods is not permitted. Please pull them in when you go out to avoid them becoming damaged.

When barbecuing on balconies or in gardens, tenants are to be considerate towards neighbours. In case of justifiable complaints, the landlord is entitled to prohibit any further barbecuing. For penthouses, the landlord may set up a separate regulation.

Shaking out and beating of containers, covers etc., from windows or balconies is to be avoided as well as the beating of carpets before 7am and after 8pm and during lunch times as well as on Sundays and public holidays.

Parking is only permitted in visitor's spaces for a limited period. Please park your car in its designated spot.

PONT DE LA MACHINE.  
THE OLDEST BUILDING IN  
GENEVA BUILT IN 1708 BETWEEN  
THE 2 BANKS. HYDRAULIC  
PUMP TO TAKE OUT THE WATER  
FROM THE LAKE FOR THE CITY'S  
FOUNTAINS IN THE OLD TIME.  
NOW ONLY FOR TRENDY EVENTS.





# Accommodation

## Property prices

The following table provides you with an estimate of property rental prices in different areas of Geneva and Lausanne.

## Price overview of unfurnished flats in Geneva city, suburbs and countryside.

Prices below don't include utilities or parking.

Bedrooms	Size	City	Suburbs / Countryside
Studio	30 – 50 m <sup>2</sup>	CHF 1,200 +	CHF 1,000 +
1-bedroom apt	50 – 75 m <sup>2</sup>	CHF 1,800 +	CHF 1,500 +
2-bedrooms apt	60 – 120 m <sup>2</sup>	CHF 2,500 +	CHF 2,000 +
3-bedrooms apt	85 – 150 m <sup>2</sup>	CHF 3,500 +	CHF 2,800 +
4-bedrooms apt	100 m <sup>2</sup> +	CHF 4,200 +	CHF 3,400 +
Small House	100 – 120 m <sup>2</sup>	n/a	CHF 4,000 +
Big House	140 – 220 m <sup>2</sup>	n/a	CHF 7,000 +

\* Studios are hardly available in the city.

## Price overview of unfurnished flats in Lausanne city, suburbs and countryside.

Prices below don't include utilities or parking.

Bedrooms	Size	City	Suburbs / Countryside
Studio	30 – 50 m <sup>2</sup>	CHF 1,000 +	CHF 800 +
1-bedroom apt	50 – 75 m <sup>2</sup>	CHF 1,600 +	CHF 1,400 +
2-bedrooms apt	60 – 120 m <sup>2</sup>	CHF 2,200 +	CHF 1,800 +
3-bedrooms apt	85 – 150 m <sup>2</sup>	CHF 2,800 +	CHF 2,400 +
4-bedrooms apt	100 m <sup>2</sup> +	CHF 4,000 +	CHF 3,200 +
Small House	100 – 120 m <sup>2</sup>	n/a	CHF 4,000 +
Big House	140 – 220 m <sup>2</sup>	n/a	CHF 7,000 +



BEAU-RIVAGE PALACE  
THE HISTORICAL LUXURY FIVE-  
STAR HOTEL IN LAUSANNE

# Furniture Rental Services

## Furnish an unfurnished home with simplicity

Furnished apartments can be hard to find and are generally expensive. By renting furniture you can find an empty property and have it entirely furnished and decorated with a complete service. For a given duration, you can equip your home with everything you may need including kitchen utensils, bedding sheets, curtains and towels. Financially advantageous and simpler than buying it all yourself, you can enjoy quality furniture at a monthly rate.

## Short term rentals from 1 week to 8 months

Staying at a hotel or a temporary flat in the meantime that your own furniture and belongings arrive can be quite costly. If you already have your future home, then you can furnish it temporarily and enjoy moving into your final destination straight away whilst saving.



## Long term rentals from 9 months to 3 years +

Buying furniture for a complete home or moving your furniture from your country can be expansive and time consuming. Perhaps you would even prefer to leave it there. Long term rentals enable you to choose quality furniture from a large catalogue for attractive monthly prices for the duration of your stay in Switzerland.

## A great service with a large selection of quality furniture from which you can choose

Myotaku provides a 5-star service and focuses on being effortless to work with, ensuring your home can be furnished with ease. An online catalogue with 1,000+ items and an instant quote tool will help you evaluate how furniture rental can work for you and fit within your budget.

## Price range in CHF

Rooms	1-3 months	1-2 years
2.5	950 – 1,500 / month	180 – 1,450 / month
3.5	1,200 – 1,700 / month	300 – 1,550 / month
4.5	1,200 – 1,950 / month	450 – 1,900 / month

Get prices online for other durations and home sizes.

USEFUL LINKS  
MYOTAKU.CH



OBTAIN AN INSTANT  
QUOTE & REVIEW THE  
CATALOGUE





# Waste Disposal and Recycling System



**USEFUL LINKS GENEVA**  
RECYCLING CENTRE GENEVA:  
GENEVE.CH/FR/THEMES/  
ENVIRONNEMENT-URBAIN-  
ESPACES-VERTS/RECYCLAGE-  
DECHETS-MENAGERS

THERE ARE 3 **ECO POINTS**  
IN THE CITY:  
IN **BERNEX**  
BERNEX.CH/NODE/3012  
IN **CAROUGE**  
CAROUGE.CH/ECOPPOINTS  
IN **BELLEVUE**  
MAIRIE-BELLEVUE.CH/DECHETS

**USEFUL LINKS LAUSANNE**  
RECYCLING CENTRE LAUSANNE:  
LAUSANNE.CH/VIE-PRATIQUE/  
DECHETS-RECYCLAGE.HTML

THERE ARE SEVERAL **ECO**  
**POINTS** IN THE CITY:  
LAUSANNE.CH



CHARGEABLE RUBBISH BAGS

## Chargeable rubbish bags

Switzerland has one of the highest rates of waste recycling in the world. Throwing away household waste costs here in Switzerland and you must use the official refuse bags to dispose of your household rubbish (as shown in the picture below). The purchase price of these bags includes a charge that covers the waste disposal costs. You can buy your official rubbish bags at the supermarket or Post Office – you may have to ask for them separately at the till. The rubbish bags come in different sizes (17, 35, 60, 110 litres) – try out what suits you best – the normal size is 35 litres. The aim is to make you think about what you're throwing away, so fill them carefully and maximise their potential! These bags are then put into the large communal containers near homes or collected on a designated day. One 35 litre bag costs CHF 2.–/per bag. So be sure to fill it completely before putting it out.

## Special in Geneva

In Geneva you can easily buy the black standard waste bags in the supermarket. There are no taxes on trash bags yet in the Canton of Geneva; it is the last canton that does that. Everywhere else you have to buy the official refuse bags.

## Recycling centres

The Swiss are keen recyclers! There are several recycling centres around Geneva and Lausanne where you can bring your recycling, which must be separated into paper, cardboard, plastic, glass, tins, aluminium, batteries, light bulbs, books, metal, old clothes and PET bottles to name a few. Visit the website

of your municipality to find out where the nearest recycling station is located and its opening hours. The rule is that when something breaks, don't throw it away, take it to the recycling point first.

## Recycling- and waste disposal plan

The waste disposal plan is called "Plan de déchets" and can be obtained at your local Council House or City hall, it shows all of the various timetables for refuse collection and the various recycling options. Most areas have regular collections of paper and cardboard. These should be stacked neatly into 20cm bundles, tied with string like a parcel.

## Electrical appliances

Defective televisions, computers, radios, refrigerators, etc. should, if possible, be returned to the original supplier or taken to a shop selling new appliances. Retailers are obliged to take these appliances back free of charge. Alternatively, they may be brought to the waste collection centre.

## Green / Compost recycling

You can save all of your edible peelings in the green or compost kitchen bin provided. Usually the bin is kept under your kitchen sink – it shouldn't smell especially if you empty it regularly and always wash it out after use. You can buy biodegradable bags to line the bin from Migros or Coop if you find that more hygienic. The bin is usually emptied once a week, along with any other compost garden bins you may have.



# Taxes

## Tax advisory and consulting office

### About us

Established since 1997, our office located in the centre of Nyon (VD) advises individuals on all matters related to personal taxation. Our area of expertise lies in addressing the international and intercantonal complexities of individuals' taxations.

Our multi-lingual experts provide a high-quality, personalised service, by proactively evaluating your tax opportunities and risks in Swiss tax matters. We strive to reach the highest level of excellence and ethics, while respecting our core values of integrity, transparency and confidentiality.

Our experienced team will accompany you throughout the entire tax year, be it for day-to-day tax questions or whenever major events occur in your life. We are proud of building trusting, long-term relationships.

## Swiss tax system – income and wealth tax

Our expertise in Swiss and international tax law will enable you to be fully compliant with your Swiss tax obligations, whilst avoiding double taxation by taking into consideration the applicable double taxation treaties. We advise on tax and social security consequences that individuals may face as they move countries.

As an expat living in Switzerland, you are liable to Swiss income and wealth tax at the federal, cantonal and municipal levels. Tax rates, rules and practices differ significantly between cantons. The choice of the canton and municipality in which you decide to settle may therefore significantly impact your tax burden. We ensure you meet your legal

obligations whilst identifying all deductions you may be able to claim, and exploring possible ways to optimise your personal tax situation.

## Our services

### Tax planning

- Swiss inbound and outbound relocation
- choice of domicile
- changes in domicile, professional activity or marital status
- taxation of financial investments
- purchase of real estate
- inheritance and gift taxation
- taxation of trusts
- taxation of diplomats and international civil servants
- guidance for the entrepreneur – company set up
- lump sum taxation
- international automatic exchange of information

## Cross-border employment

- employee benefit plans (stock options, bonus, etc.)
- expense policy, lump-sum expenses, representation allowances
- negotiation of tax rulings with Swiss tax authorities

## Cross-border pensions

- international social security
- international pension schemes

## Contact

**taxadvice ltd liab. co** | christine ledure

15, rue de la combe | ch-1260 nyon

phone +41 (0)22 361 30 47 | info@taxadvice.ch



**taxadvice**  
Do you speak tax?  
We do – fluently.



**USEFUL LINK**  
**TAXADVICE.CH**



# Cost of Living

The cost of living in Switzerland is amongst the highest in the world. On average, people spend about one third of their income on rent and about 5% on insurance.

Average monthly expenditure of an individual in Switzerland. Amount in CHF			
<b>Fixed costs:</b>		<b>Food, household, personal expenses:</b>	
Housing (room CHF 400–1,000, apartment CHF 800–1,600)	800.-	Food	400.-
Health insurance	300.-	Clothes, shoes, hairdresser, mobile, leisure time	250.-
Household contents		Cleaning products, personal hygiene, waste disposal	30.-
private liability insurance	30.-	<b>Provisions:</b>	
Landline / Internet / TV / Serafe	120.-	Dentist, doctor, optician, medicines, gifts, repairs, small purchases	180.-
Energy (electricity / gas)	40.-		
Public transport	100.-		
		<b>Total</b> amount in CHF	<b>2,250.-</b>

SOURCE  
ETH ZÜRICH

## Utility Costs

### Billed by the landlord as part of the rent:

Utilities or ancillary costs refer to the actual expenditure you incur for additional costs on top of rent and can include the following: heating, water, electricity (common areas), maintenance of common areas of house, caretaker costs, gardener, lift maintenance, sewerage costs and management fees. The costs for utilities are paid on a monthly basis, together with the rent and are either settled as the same amount every month or according to use. Akonto is the difference between what you have paid in advance and the actual costs. This amount will then be refunded to you or you will be billed, if the costs are higher. Utility costs represent an average of 10% of your monthly rent.

### Billed separately by the respective providers:

#### Electricity

Electricity is billed directly by the electricity company and is to be paid in addition to the utility costs unless specified differently in your rental agreement.

#### Telephone, Internet, TV and radio licence fee

Those are separate costs in addition to the rent.



## Radio and TV fees in CHF incl. VAT

	Yearly
Private household (private)	335.-
Collective household (business)	670.-



## TV / Radio Serafe

This is a radio and TV fee to the device-independent household, all households in Switzerland are basically liable to pay the fee. Each household will automatically receive an invoice from Serafe, if they have registered in the local community.

## TV / Internet and landline package

Before moving into your new apartment/house you need to ask your real estate agency or landlord what connection with which providers are possible and recommended for the particular building and area. It is recommended you compare several offerings and prices.

## Why choosing Swisscom?

When you will be in Switzerland, you will have to make a choice; the choice of your provider for Internet, TV and Mobile. Switzerland is a beautiful country where the installation is sometimes complicated by the administrative aspects. One

of our qualities is to simplify this process as much as possible. We are the historical Swiss operator and as such we pay great attention to the quality of our services in order to continually differentiate ourselves from our main competitors.

Swisscom is a unique operator; in 1990, we were present at the creation of the World Wild Web, we are the authors of the prepaid SIM card and we are the only operator in the world to have a dedicated unit for expatriates.

We have always been at the forefront of technology while being close to our customers in order to understand and offer them what they really need. Thus, we advise and help several thousands of expatriates every year to settle in their new home. Either with the help of their relocation agency or by contacting us directly to explain our different offers.

## USEFUL LINKS

SWISSCOM.CH  
UPC.CH  
SUNRISE.CH  
SALT.CH

PHONE COMPARISON  
COMPARIS.CH

TV/RADIO FEES  
SERAFE.CH





We have kept it simple; for all our services, we offer different formulas related to your needs. Our central product is the Internet which you can complete according to your desires with the customisable formulas that we offer for TV, mobile or landline. This allows you to adapt your needs and desires as you go along.

With these subscriptions, you can get an e-mail address without any advertising, a cloud with servers in Switzerland and access to TV broadcasts, allowing you to watch your favorite programs at any time on any device.

In order to accompany all our customers in the digital environment, we have a range of additional products and services. With an antivirus system, Cyber-Protect insurance or a special IT support department (charged), everything is available to make your use easier.

Our mobile subscriptions take into account your travels. Thus, most of our offers include communications and datas in Switzerland and throughout Europe.

We also offer the possibility of linking the subscriptions of the whole family in the same

group in order to take advantage of a generous discount.

We can activate your contract before you are in Switzerland, so when you move in, everything is already working! Even better, all we need is your passport or the ones of your family members to activate a mobile subscription.

Our service doesn't stop there, when you leave Switzerland, we terminate contracts within a day and at no cost, unlike other operators who charge termination fees.

Our team has been following expatriates throughout Switzerland for about ten years. We listen to you and you are a privileged person for us. From the first to the last day.

Now, maybe you will have made your choice!

**Welcome to Switzerland, welcome to your new home.**

**To reach us directly:**

Service.expats@swisscom.com



Send us your contact information and we will be happy to contact you to advise and accompany you in your installation.

**Laurent Negaty**

Account manager Romandie.

Born 1970 in Geneva. At Swisscom since 2010 and in the communication business since 2004.

Mobile: +41 (0)79 448 38 36

Mail: laurent.negaty@swisscom.com

## Schooling and Education

### Public school vs. international school

When coming to Switzerland with school-aged children, you may be faced with a dilemma: Swiss public school or an international school? All of Switzerland's schools, both public and international, have a very good reputation. Education is one of Switzerland's major strengths and is the country's main asset to uphold its position in the top flight of the scientific and economic world. There is an excellent variety of public, semi-private, private and international schools in Switzerland. Choosing the right school for your children requires you to be well-informed, organised and open-minded. There are many important factors which require your consideration in order to make the right decision:

- Age of your child
- Your child's personality
- Prior school experience
- Languages spoken
- How long you are planning to stay in Switzerland
- Where you are going next - are entrance exams required?
- Where do you believe/want your child's future be based?
- Do you have private school tuition support?

### The public school system in Switzerland

The public schools are highly respected. 95% of Swiss parents, regardless of income or education, choose to send their children to a local school. Class sizes are small (between 20 to 25 children). The state gymnasium (grammar/high schools) offer a rigorous programme, resulting at age 18 in a bilingual Matura. At first glance, using the local system can seem daunting to foreigners.

However, the Lausanne and Geneva region welcomes international families. All newcomers to the region's schools receive free French support either in a special integration or a regular class.

Schools are assigned by the authorities on the basis of the home address. If a nearby school is full or cannot offer a French integration programme, children may have to travel further.

The system is very child-centred and young children up to the end of primary (age 12) attend school every morning and one to three afternoons a week.

Wednesday afternoon is left free for the children to pursue their interests e.g. a sports team, playing a musical instrument. However, for working parents many schools now offer an afterschool programme and lunchtime supervision. These programmes are reasonably priced but often oversubscribed.

Switzerland has no federal education authority or national curriculum. This can make moving between different cantons with children a frustrating experience, not only with regard to the language of instruction.

Depending on the canton, the main language spoken in the classroom is French, German or Italian. Traditionally, the second language would be one of the remaining two official languages of Switzerland.





# Schooling and Education



ECOLINT, INTERNATIONAL SCHOOL OF GENEVA.



In recent years, however, there has been a trend towards teaching English as the first foreign language at school.

Public schools include 2 years of kindergarten, 6 years of primary and 3 years of secondary school followed by the highly respected apprenticeship system or 4 years gymnasium (6 years if already started after primary school). Gymnasium students leaving with the Matura have a high level in their languages and maths. The Matura is becoming an increasingly portable qualification, recognised as valuable by universities such as Oxford and Cambridge in Great Britain as well as MIT in the United States. The public school as well as the private international school year runs from the end of August to the end of June.

### Private schools

While local schools offer an excellent level of education and one of the best routes to long-term integration, they are not for everyone. We are fortunate in Lausanne and Geneva to have a selection of private schooling solutions with excellent curricula.

### Education in Geneva

There are a vast number of schooling options in Geneva that expats can consider for their children, offering various levels and curriculums of education. International or private schools may be an option for expats staying for shorter periods, but the majority of children attend public schools.

### Public schools in Geneva

Public schools in Switzerland are available for free to all children, including expats. These government-funded schools are available for children from the age of 4.

Children who do not yet speak French are often placed in a newcomer class, which focusses on learning the French language in order to continue their education in French.

Secondary schools in Switzerland are usually selected based on aspirations of the child, or aptitude tests, with schools focusing on different levels and routes of education, ranging from practical education to gearing towards university-level education. Classes are taught in French, however, national languages such as German or Italian and English are taught in secondary schools as well.

### International and private schools in Geneva

Throughout Geneva, you can find several international and private schools, which can be a good option for those living in the city for a short period; however, they can be very costly. The majority of the international schools in the city teach the international baccalaureate curriculum and some the British programme. Many of these schools have limited capacity, so it is best to start the application process as early as possible.



### Ecolint International School of Geneva

Language: bilingual  
International Primary Curriculum and National program International Baccalaureate  
3 campuses  
Ages: 4 to 18  
🌐 [ecolint.ch](http://ecolint.ch)

### College du Lemman

Language: bilingual  
International Primary Curriculum and National programme International Baccalaureate  
Ages: 3 to 18  
🌐 [nordangliaeducation.com/our-schools/switzerland/cdl](http://nordangliaeducation.com/our-schools/switzerland/cdl)

### British School of Geneva

Language: English  
English Curriculum  
4 to 18  
🌐 [britishschoolgeneva.ch](http://britishschoolgeneva.ch)

### Geneva English School

Language: English  
English Curriculum  
Ages: 4 to 18  
🌐 [geschool.ch](http://geschool.ch)

### Institut de Lancy

Language: bilingual  
Swiss and International curriculum  
Ages: 3 to 18  
🌐 [iil.ch](http://iil.ch)



### Ecole Florimont

Language: French & bilingual  
Swiss and International curriculum  
3 to 18  
🌐 [florimont.ch](http://florimont.ch)

### Deutsche Schule

Language: German  
German curriculum  
3 to 19  
🌐 [dsgenf.ch](http://dsgenf.ch)

### Ecole Moser

Language: French  
Swiss curriculum  
8 to 18  
🌐 [ecolemoser.ch](http://ecolemoser.ch)

FOR AN OVERVIEW OF ALL THE INTERNATIONAL SCHOOLS

ACEP.CH  
SWISS-SCHOOLS.CH



WORLD INTELLECTUAL PROPERTY ORGANIZATION IN GENEVA.



# Schooling and Education

## Public schools in Lausanne

Public schools in Lausanne are available for free to all children, including expats. These government-funded schools are available for children from their youngest age.



Children from 6 years old who do not yet speak French are often placed in a newcomer class, which focusses on learning the French language in order to continue their education in French. Children of 12 years or older are typically placed in an international bridging class where they will study in both English and French for an immersion year before being integrated with the school.

Secondary schools in Lausanne are usually selected based on aspirations of the child, or aptitude tests, with schools focusing on different levels and routes of education, ranging from practical education to gearing towards university level education. Generally, classes are taught in French, however some secondary schools teach a dual-language curriculum with some subjects taught in both French and English.

## International and private schools in Lausanne

Throughout Lausanne, you can find a number of international and private schools, which can be a good option for those living in the city for a short period. The majority of the international schools in the city offer the International Baccalaureate programme. They have limited capacity, best to start the application process as early as possible.

## Ecole Nouvelle de Suisse Romande

Bilingual school – IB & Swiss diploma  
🌐 [ensr.ch](http://ensr.ch)

## Ecole Lemania

French curriculum & IB & Swiss diploma  
🌐 [lemania.ch](http://lemania.ch)

## Collège Champittet

Bilingual school – Swiss diploma & IB  
🌐 [nordangliaeducation.com](http://nordangliaeducation.com)

## Ecole Hoteliere de Lausanne

Lausanne hosts the best world hospitality school.  
🌐 [ehlgroup.com](http://ehlgroup.com)

## International School of Lausanne

IB World School - IB, PYP, MYP and DP  
🌐 [isl.ch](http://isl.ch)

## Language schools in Geneva & Lausanne

If you would like to learn some French or German, improve your English or learn any other new languages whilst in Switzerland, here is a list of possible language schools. Check out their web-sites and then choose one that fits your needs.

## Online Language school

🌐 [lingoda.com](http://lingoda.com)

## Ecole Club Migros

🌐 [ecole-club.ch](http://ecole-club.ch)

## Swiss French School

🌐 [swissfrenchschool.ch](http://swissfrenchschool.ch)

## Berlitz

🌐 [berlitz.com](http://berlitz.com)

# Banking

Switzerland is well known for its thriving banking and financial sector. As a leader in banking services, you can be sure to get excellent banking service whilst living here in Switzerland. Above all, the banking system scores extremely well on security and efficiency. Bank clients are offered services tailored to meet their particular requirements, be it simply opening a bank account with credit and debit cards and e-banking or more sophisticated investment advice. The key to choosing a good bank is to match offerings and client relationship personnel to your own banking needs.



**Opening a bank account** First of all, you don't need to worry about the language barrier when applying to open a bank account in Switzerland: front-office employees in most major Swiss banks speak English and a few of them even have English versions of their brochures, such as Credit Suisse.

**Therefore Prime Relocation and Credit Suisse are pleased to offer you a comprehensive package of services and financial solutions at preferential terms and conditions.**

Credit Suisse has the essential services for all of your needs. Whether you are interested in accounts, cards, home financing, or investments, as a Prime Relocation client, you can find the right banking solution for you at a reduced price.

## Bonviva Banking Packages

Bonviva offers all of the relevant services for payments and savings, plus attractive additional services. The Bonviva Banking Packages include all accounts and cards that you need for your daily banking, and all payment transaction fees\* are included. As a Prime Relocation client, you are eligible for the Bonviva Silver Package free of charge for two years; Bonviva Gold and Platinum are free of charge for one year.

More information on **Bonviva** is available at  
🌐 [credit-suisse.com/bonviva](http://credit-suisse.com/bonviva)

## Mortgages

Have you found the house or apartment of your dreams? All that's missing is the right financing. Credit Suisse offers you attractive solutions tailored to your personal needs and preferences for financing your own home. You are entitled to a 0.2% interest rate reduction on your mortgage.

For more information, visit  
🌐 [credit-suisse.com/mortgages](http://credit-suisse.com/mortgages)





# Banking

## Credit Suisse Invest

Ready to invest your money successfully? From covering your basic needs to premium services for experienced investors, Credit Suisse has a wide range of solutions that are sure to fit the bill. As a Prime Relocation client, you will receive a 30% discount on safekeeping, investment, and mandate fees in the first year.

More information is available at  
🌐 [credit-suisse.com/invest](https://credit-suisse.com/invest)

## Financial planning

Financial planning at Credit Suisse includes a holistic analysis of your financial situation, taking account of pension provision, taxes, and inheritance law. Credit Suisse will advise you in accordance with your situation and help you find the best route

to your goals. This gives you the information you need to make the best financial decisions for your future. You are entitled to free financial planning services up to a value of CHF 1,000.

Further information at  
🌐 [credit-suisse.com/financialplanning](https://credit-suisse.com/financialplanning)

## Individual advice

There are many special moments in life, whether it be buying your first home, becoming a parent, gaining promotion, or even making plans for early retirement. Many of these special moments come with financial opportunities and needs. Which stage of life have you reached? Using our comprehensive, structured advisory process, we analyze your personal financial situation in five steps.

## Comprehensive optimization

On the basis of the analysis, we show you which areas of activity have room for improvement: Does your current portfolio or strategy still match your understanding of risk? Is your home still optimally financed? Are there gaps in your retirement plan? Is there any room for improvement with regard to tax optimization? What kind of yields can you expect? Our answers will help you make sound decisions for a successful future.

## Your direct contacts at Credit Suisse:

**Mr. Joël Steudler**, +41 22 393 23 63  
[joel.steudler@credit-suisse.com](mailto:joel.steudler@credit-suisse.com)

\* Not including third-party fees. Savings accounts are not suitable for payment transactions (charges apply).



# Insurance

## Mandatory insurance

Mandatory insurance in Switzerland includes: health, accident, car, and social insurance. In the cantons of Vaud and Geneva, personal or third party liability insurance is also mandatory! It protects you, your family and all other people living with you in the same household. It covers the costs of compensating third parties for damage to property, for personal injury and for monetary losses unintentionally caused by you or by one of the people covered by your policy (family).

## Health insurance

Basic health insurance is compulsory for everyone living in Switzerland and is called "Assurance-maladie". Foreigners must obtain health insurance within three months of arriving in Switzerland. Applications must also be made for the spouse and children, as they are not automatically insured. A good website which compares prices and providers is [www.comparis.ch](https://www.comparis.ch). Supplementary insurance called "assurance complémentaire privée" offers the choice of hospital treatment in a half-private (two-bedroom) or fully private (single-room) and also includes coverage for additional treatment which is not covered in the basic insurance. Further, you can choose to pay a deductible (franchise) ranging from CHF 300 – 2,500 a year which reduces the monthly premium.

## Accident insurance

All employees are covered by accident insurance, which is provided by the employer by law. Should family members not be employed, they must be covered separately through private insurance. This can be included as part of the health insurance.

## Social insurance

Swiss social security is based on the 3-pillar system. The first and second pillars are mandatory and are to be organised by your employer unless you are self-employed.

The first pillar represents the old age and survivor's insurance (AVS) and disability insurance (AI). It is the basic component of the insurance system and is compulsory for all people who live and work in Switzerland. The second pillar represents the occupational retirement scheme. It is compulsory for all those working in Switzerland with an annual income of at least CHF 21,150. The occupational retirement scheme is run by the retirement funds, which are all very differently organised. The third pillar is a private and therefore voluntary pension plan. The contributions are tax deductible up to a specific amount. These figures vary slightly each year.

USEFUL LINK  
[GE.CH](https://www.ge.ch)

LAUSANNE  
PALAIS DE RUMINE  
PHOTO: MYSWITZERLAND.CH





# Insurance

USEFUL LINKS

OVERVIEW OF SWISS HEALTH INSURERS:  
COMPARIS.CH

Voluntary but highly recommended insurances

A household insurance protects all your household contents against fire and water damage, theft, glass breakage, etc. Household contents include movable property and personal effects, such as furniture, clothes, electronic equipment, pictures and musical instruments. In the canton of Vaud, a separate insurance provided by ECA covers natural disasters etc. and is mandatory for tenants and landlords.

eca-vaud.ch

PADDLE STEAMER CRUISE ON LAKE LEMAN WITH A VIEW OF THE CHILLON CASTLE.  
PHOTO: MYSWITZERLAND.CH

In Geneva and most other cantons, those risks are covered by the household insurance.



MySwissInsurance

Founded by Markus Haefeli and Francois Dutoit, MSI is all about offering 360-degree insurance solutions to expats and diplomats moving to Switzerland. With more than 17 years of experience working with expats, we understand the specific insurance requirements more than anyone else.

Contact us:

info@myswissinsurance.ch

myswissinsurance.ch



We can always rely on you,  
because you offer us the best solution.

Elise Malzahn  
Geneva agency  
Sales advisor  
geneve@concordia.ch

Mohamed Chelghoum  
Geneva agency  
Sales advisor  
geneve@concordia.ch

www.concordia.ch

CONCORDIA  
Bound by trust



# Medical



REGA  
"SWISS AIR-RESCUE"  
ONE OF THE AIRBUS  
HELICOPTERS

## In general

No vaccinations are required to enter Switzerland. It is however important to bring any previous medical certificates or records with you from your home country. Swiss medical facilities are among the best in the world and of a very high standard, which is why there is a hospital or clinic on nearly every street corner. However, health care is expensive and it is recommended that you obtain adequate health insurance soon after arrival.

## Doctors

Once here, you should set up a general practitioner to refer to in case of illness – it is a matter of going along and trying them out until you find one that suits you best. The general practitioner will then refer you to a specialist or hospital if needed. Generally, it is common to have a separate doctor for children, a paediatrician who are specialised in treating children and women usually need to locate a gynaecologist for an annual check-up.

Listing of all doctors and dentists in Switzerland,  
🌐 [doctor.ch](https://doctor.ch)

## Pharmacy

In every neighbourhood you will find pharmacies that are open during regular working hours. Swiss supermarkets do not sell any medications. For over-the-counter medications, such as painkillers and cough syrups, you need to go to a pharmacy.

## 24-hours pharmacies

### Pharma24

Pharmacie de Garde Genevoise  
Boulevard de la Cluse 38, 1205 Genève  
022 808 00 18

### Pharmacie 24

Avenue de Montchoisi 3  
021 613 1224

Please refer there for emergency medication. Also, just next to this pharmacy is a medical centre, just in case your doctor cannot see you in time or on weekends/evenings.

## Hospitals in Geneva

### HUG

Hôpitaux universitaires de Genève  
Rue Gabrielle-Perret-Gentil 4  
1205 Geneva  
🌐 [hug.ch](https://hug.ch)

### Hôpital de la Tour

Avenue J.-D.- Maillard 3  
1217 Geneva  
[la-tour.ch](https://la-tour.ch)

### Clinique des Grangettes

Chemin des Grangettes 7  
1224 Chêne-Bougeries  
🌐 [hirslanden.ch/fr/clinique-des-grangettes/home.html](https://hirslanden.ch/fr/clinique-des-grangettes/home.html)

## Clinique Générale Beaulieu

Chemin de Beau-Soleil 2  
1206 Genève  
🌐 [beaulieu.ch](https://beaulieu.ch)

## Main public hospital in Lausanne

### CHUV

Centre Hospitalier Universitaire Vaudois  
(one of the biggest in French part of Switzerland and ranked amongst the best in the world)  
🌐 [lausanneuniversityhospital.com/home](https://lausanneuniversityhospital.com/home)

## Private Clinics

### Clinique Bois Cerf

🌐 [hirslanden.ch/en/clinique-bois-cerf/home.html](https://hirslanden.ch/en/clinique-bois-cerf/home.html)

### Clinique La Source

🌐 [lasource.ch](https://lasource.ch)

### Clinique Cecil

🌐 [hirslanden.ch/en/clinique-cecil/home.html](https://hirslanden.ch/en/clinique-cecil/home.html)

### Clinique Montchoisi

🌐 [montchoisi.ch](https://montchoisi.ch)

## Emergency centres

### Centre médical de Vidy

🌐 [vidymed.ch/centre-medical-de-vidy.html](https://vidymed.ch/centre-medical-de-vidy.html)

### Centre médical la Source

🌐 [vidymed.ch/centre-medical-de-la-source.html](https://vidymed.ch/centre-medical-de-la-source.html)

## Centre médical d'Epalinges

🌐 [vidymed.ch/centre-medical-d-epalinges.html](https://vidymed.ch/centre-medical-d-epalinges.html)

## Centre Le Flon

🌐 [flon.ch/fr/locataires/services/7/sante-bien-etre/35/permanence-unisante-du-flon/99/](https://flon.ch/fr/locataires/services/7/sante-bien-etre/35/permanence-unisante-du-flon/99/)

## Medical Emergency numbers

Ambulance:	144
Fire service:	118
Police:	117
Poisons information:	145
Rega (air rescue):	1414

Doctor-on-duty **Geneva:** 022 754 54 54  
Doctor-on-duty **Lausanne:** 0843 133 133



### USEFUL LINKS

MEDICAL CENTRE  
PERMANENCE-MEDICALE.CH

SOS MÉDECINS  
SOS-MEDECINS.CH

### MEDBASE

MEDBASE.CH/FR/  
LESCENTRES/DETAIL/  
MEDBASEGENEVE-GARE-  
CORNAVIN/

MEDBASE.CH/STANDORTE/  
DETAIL/MEDBASE-LAUSANNE-  
GARE/

EN.COMPARIS.CH/  
KRANKENKASSEN/UMFRAGE/  
HITLIST.ASPX

HÔPITAUX UNIVERSITAIRES  
DE GENÈVE





# Post Office



POST.CH



1843 DOUBLE GENEVA  
FIRST STAMP FROM THE  
CANTON OF GENEVA

Switzerland has a very efficient postal system. Opening hours of your local post office vary according to branch but generally they are closed from 12pm to 2pm for lunch and at 11am on Saturdays. Post offices in city centres are usually open during lunchtime.

Post offices offer a diverse selection of things to buy including stationary, magazines, confectionery, mobile phones and gift cards for all kinds of shops and institutions.

### Parcel collection notice

Should you receive a parcel and not be at home, the postman will put a yellow slip of paper in your letterbox and ask you to go and get it at your post office (always take proof of identification with you). As a rule, the post office will keep the parcel for a week and then send it back to sender if you do not pick it up in time.

Mail in Switzerland is sent either A or B post. With A post, delivery is promised for the next day or B post within 2–3 working days.

### Change of address

When you move, you have to inform the post office who will forward your mail to your new address within Switzerland. You may do so at the counter or online.

### Temporary mail stop

Should you be planning to go away for a short break, you can get your post forwarded to your holiday address or cancel the post for a week or two for holidays and get it sent to you in your letterbox on your return. Fill out a form at the post office or do it online. This saves the rather small letter boxes from overflowing.

### Post finance

You can open a “Postscheckkonto” at your local post office. This enables you to pay your bills as well as make cash withdrawals using the postfinance card. You may also make payments in many shops using this card – similar to a debit card from other banks..

🌐 [postfinance.ch](https://postfinance.ch)

### Postage for standard letters (CHF)

25 x 17.6 x 2cm and up to 20g is as follows:

	A	B
Switzerland	1.–	0.85
Europe	1.50	1.40
Overseas	2.–	1.70



# Public Transport

Public transport in Switzerland is extremely efficient and runs very smoothly – everything is timed to perfection. Lots of places can be reached through a network of trains, buses, boats and cable cars. Buses play an important role too – the Swiss “Postbus” links smaller more remote villages with the nearest train station. Swiss railways, the CFF, have a great website which will help you when you plan a journey – [cff.ch](https://cff.ch) – this gives you access to timetables for the trains, boats and buses which enables you to plan a journey from Geneva or Lausanne to Paris and shows all of the train changes necessary plus platform details.

### Useful public transport apps

- CFF Mobile
- Moovit

### Various abonnements

Children under six years of age travel free. Purchase a junior card for 6–16 year olds who can then travel for free if accompanied by a parent – it costs CHF 30 and lasts for a year. The third child receives his/her card free when you buy cards for the first two kids!

### SwissPass

The SwissPass (launched 01/08/2015) is more than just a Half-Fare travelcard or GA travelcard as it offers you access to partner services from Mobility Carsharing, PubliBike, SwissMobile and in the ski areas. Thanks to the SwissPass, you no longer have to think about renewing your travelcard and so you always stay mobile. Your SwissPass Card is valid for several years and will be always renewed on the same card. CFF reminds you of the optional cancellation deadline in good time prior to the

automatic travelcard renewal.



### Half-Fare travelcard

It is advisable for adults to buy the Half-Fare travel card or “carte demi-tarif” to get a reduced fee for train and bus travel and is also valid for certain mountain cable cars and trains. It costs CHF 185 (in the first year) and CHF 165 in the following years.

### GA travelcard (General Abonnement)

With the GA you may use any kind of public transport in Switzerland. This costs for an adult in second class CHF 3,860 for one year. Various partner and family price reductions are offered.

### One day ticket

This can be purchased at the city hall for CHF 50.– to travel a full day everywhere in Switzerland.

### Further information

Dogs and cats travel free if you carry them in a basket, otherwise you must purchase a half price ticket for them. You can take your bike on the train but you have to buy a special ticket for it – ask at the counter. It is easy to travel with push chairs and prams on the trains – especially with the S-Bahn because these trains meet the platform directly and you can just wheel your pram on. Choose the carriages with the pram sign and it is usually possible to lift the first set of seats and fit the buggy in.

CFF RAILWAY WAGON WITH  
CHILDREN'S PLAYGROUND





# Public Transport

USEFUL LINKS  
LAUSANNE

PUBLIC TRANSPORT  
TL - TRANSPORTS LAUSANNOIS  
T-L.CH

USEFUL LINKS  
GENEVA

PUBLIC TRANSPORT  
TPG - TRANSPORTS PUBLICS  
DE GENÈVE  
TPG.CH

THE COMPAGNIE GÉNÉRALE  
DE NAVIGATION  
CGN.CH

## Metro in Lausanne

Lausanne is the only city in Switzerland having not one but two metros (a 3rd line being currently developed).

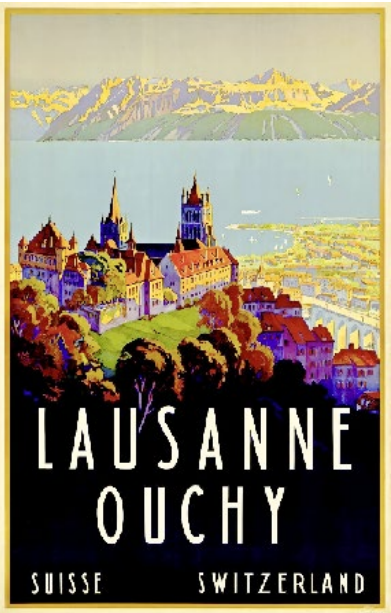
The “M1” was the first to be created back in 1991. Its route joins the city centre of Lausanne (Departure from the Flon) and goes west all the way to Renens Station, passing through the University campus.

The “M2” was built way later, back in 2008 (automatic with no driver). Its purpose is to join the south of Lausanne (Ouchy) all the way to the north (Croisette) in crossing the city.

The “M3” Lausanne – Blécherette station to cope with the increase in passengers passing through Lausanne station and to serve the developing districts in the north of the city, a third metro line will complete the network in 2030.

## Public transport on the lake

The Compagnie générale de navigation (CGN) sur le Lac Léman, General Navigation Company is a public Swiss company operating ships on Lake Lemman, connecting towns in both France and Switzerland including Geneva, Vevey, Montreux, Évian-les-Bains, and Lausanne.



VINTAGE  
TOURISM  
POSTER



LAUSANNE METRO

PADDLE STEAMER “RHÔNE” ON THE LAKE LEMAN.



# Driving

Under Swiss law you need to carry a few things with you in your car at all times:

- a red breakdown triangle and bright yellow vest
- your driver’s licence
- the vehicle’s registration papers
- the car’s exhaust test certificate
- insurance documents
- plus a European Accident Report to be filled out in case you have an accident, supplied by your insurance company.

Please observe that in Switzerland there is a strict rule about giving priority to cars coming from the RIGHT – even in car parks! Buses, trams, ambulance and police cars always have right of way. If you have or cause an accident because you didn’t give way to cars coming from the right, you will be liable. Pedestrians always have the right of way at crossings.

When driving uphill, the car driving UP has priority, so if you meet a car and you cannot pass, the one descending the hill should back up. Do not use a mobile phone when driving. The Drink drive limit is 0.5mg / L blood-alcohol level = one glass of wine.

## Driver’s licence

Your foreign driving licence is valid for one year, after that and before the time is up, please apply for a Swiss driving licence.

## Speed Limits

- |                                   |   |
|-----------------------------------|---|
| <b>30/50km/h</b><br><b>60km/h</b> | <b>in town centres</b><br><b>in the outer</b><br><b>suburbs</b> |
| <b>80km/h</b>                     | <b>when outside</b><br><b>towns</b>                             |
| <b>120km/h</b>                    | <b>on motorways</b>   |

Speeding cameras are prevalent throughout Switzerland. There are set fines for low over speeding, and percentage fines on your gross income on high over speeding.

## Winter

It is highly recommended to use winter tyres to cope with the wintry conditions we enjoy in Switzerland. Aim to change your tyres from summer to winter around mid-October and back again to summer tyres around April. It might be that you will be liable if you have an accident in wintry conditions and you haven’t got the correct tyres. If you are driving to the mountains, it is advisable to carry snow chains in the vehicle, unless you have a four-wheel drive. Those can be rented or purchased. Chains are relatively inexpensive but are invaluable if you are caught in bad weather. Before the trip, read the instructions and do a trial run of putting them on. Keep a pair of gloves with the chains; hands get cold very quickly. You may want to join the TCS or “Touring Club Suisse” which is the Swiss rescue service for breakdowns. Membership isn’t expensive and it may well be worth it – see their website on tcs.ch.



CAR SHARING  
MOBILITY.CH

ROAD TRAFFIC OFFICE  
GENEVA

GE.CH/DOSSIER/VEHICULES-  
CONDUCTEURS

ROAD TRAFFIC OFFICE  
LAUSANNE

VD.CH





# Driving

## Motorway tax

You will need a sticker to show that you have paid the motorway tax – the “motorway vignette” which costs CHF 40. It is available from petrol stations or post offices and is valid for one calendar year. Buy your new one by the end of January each year.

**Children** under 12 years or below 150 cm must be seated in booster seats.

## What to do if you have an accident

If you are involved in a minor accident where police assistance is not needed, note the registration numbers, names and addresses of all parties and witnesses. Complete the European Accident Report, have it signed and send it to the insurance company even if it was not your fault. It is advisable to report any minor accident to the police within 24 hrs to avoid any repercussions or problems with your insurance claim later on.

If you witness an accident you must stop by law, offer assistance and provide evidence. Call the police 117 and the ambulance 144 if needed.

## Parking

Only park where you are allowed in clearly marked areas. Most parking areas cost something. Do not renew your time in the same parking space, as you will risk getting a fine. Parking lines may be white, blue or yellow. White is free, yellow is private and blue is for parking with a parking disc. To park in a blue area, set your parking disc to your arrival time and check how long you can stay – usually it is 1 hour for free.

Used car buying guide. Some helpful links and tips to help you find a good used car:

- [autoscout24.ch](https://www.autoscout24.ch)
- [car4you.ch](https://www.car4you.ch)
- [ricardo.ch](https://www.ricardo.ch)

## Finding a used / new car?

As an expatriate, your requirements may differ from the ones of a regular car buyer in Switzerland. And we, at Autociel understand that completely. Instead of selling you a particular brand or model of car, we focus on understanding your requirements and finding you the car you need. So, whether or not you have a clear idea about your dream car, our experts offer friendly consultation on which car will serve you and your family the best. With a huge range of brands and models on offer, we get your dream car in a completely hassle-free manner.

## Leasing a car

Leasing a car in Switzerland as an expat can be a complicated process. However, paying a hefty down payment and sky-high credit rates are not your only options. We, at Autociel, ensure that you get to lease a car at a reasonable price and contract terms. Thanks to our extensive experience of working with expats, we can offer you a hassle-free car leasing service if you have a valid work permit even with an L residency permit.

## Contact Autociel

Since 2002, **Autociel** is the independent car expert in Switzerland. If you need help with your car or to get one, you may contact us directly through [jerome.chessex@autociel.ch](mailto:jerome.chessex@autociel.ch) and have a look at our website [www.autociel.ch/expat/](https://www.autociel.ch/expat/) for more information.

## Bicycles

Switzerland has great cycle paths and cycling is a great way of exercising with all the hills and mountains. Please note that children up to age of 14 have to wear helmets.

- Bikes need a bell and if you cycle in the dark a headlight and at least a rear reflector are required.
- Bikes may be rented at main railway stations or bike shops.



ANNUAL GENEVA  
INTERNATIONAL MOTOR SHOW  
AT PALEXPO.



# Shopping



CUSTOMER CARDS FROM THE TWO LARGEST RETAILERS COOP AND MIGROS.

Shopping in Switzerland is considered to be more expensive than in other European countries and restricted in choice. However, there is now a great variety of supermarkets (the largest being Migros and Coop and the smaller, cheaper ones are Lidl, Aldi, Denner) that offer fresh local products. All of your other shopping requirements will be met quite easily in your high streets. Switzerland does not have a great culture of “mall” shopping, which you may be used to from home but there are a few larger shopping centres that are well worth a visit.

## Supermarkets

Opening hours are more restricted here than in either the UK or US. Smaller supermarkets in villages close for the lunch period. On Saturdays, most of the shops close at 6pm, in small villages they might close earlier. In Lausanne or Geneva the shops stay open longer – until 6 or 7pm in the main shopping district. Supermarkets are generally open from 8am till 7pm daily.

The two main supermarket chains are “Migros” and “Coop”. Migros mostly sell their own branded food and don’t sell alcohol or tobacco, which Coop does! Both stores offer loyalty cards – Migros has the “Carte Cumulus” and Coop the “Supercard” which are well worth having. With the Cumulus card, you are awarded vouchers which you can then use as cash to pay in the shop and with the supercard from Coop, you can shop at Coop City and pay with your points or choose something from their catalogue or even turn your points into air miles. Application forms are available from the customer services desks.

## Online shopping

Migros and Coop both offer an online shopping and home delivery service. See [coop.ch](http://coop.ch) and [shop.migros.ch](http://shop.migros.ch).

Should you run out of something out of shopping hours try:

- Petrol stations – mostly open 7 days a week
- Railway station shops
- Airport shops

## Organic food

Organic food in Switzerland is called “Bio”, there are specialised shops selling Bio as well as the farm shops. Specialty foods can be bought in the gourmet shops like Globus and Manor Food. There are also a number of ethnic shops available.

## Clothes Shopping

Generally, the shops in the high street are open from 9am till 7pm during the week. The biggest and finest department stores in Geneva and Lausanne are “Globus” and “Manor”, where you will find a good selection of everything.

Foreign online shopping:

- [aussieshop.ch](http://aussieshop.ch)
- [bofrost.ch](http://bofrost.ch)
- [cheeseclub.ch](http://cheeseclub.ch)
- [britshop.ch](http://britshop.ch)
- [jimsbritishmarket.com](http://jimsbritishmarket.com)
- [tasteofamerica.ch](http://tasteofamerica.ch)
- [americanmarket.ch](http://americanmarket.ch)
- [myexpatshop.com](http://myexpatshop.com)
- [dutchstore.ch](http://dutchstore.ch)



THE FAMOUS SAUCISSONS VAUDOIS.

## Shopping centres

There are bigger shopping centres around, which may just be a short train ride or car journey away. The largest shopping are:

### Geneva

#### Balexert

Avenue Louis-Casaï 27, 1209 Vernier  
🌐 [balexert.ch](http://balexert.ch)

#### Centre La Praille

Mall with restaurants, cinemas and shops.  
Route des Jeunes 10  
1212 Grand-Lancy

### Lausanne

#### Centre Métropole

Rue des Terreaux 25, 1003 Lausanne  
🌐 [mymetropole.ch](http://mymetropole.ch)

#### Léman Centre Crissier

Chemin de Saugy 1, 1023 Crissier  
🌐 [leman-centre.ch](http://leman-centre.ch)

## Markets in Lausanne and Geneva

There are a number of local markets that are well worth visiting if you enjoy fresh, local produce or organic food.

There is a market in Lausanne on Wednesday and Saturday in the streets of the city centre (8am – 2:30pm). Go along and have a look at what’s on offer – everything from flowers to farmer’s products.

On Wednesdays and Saturdays, the people of Geneva go to the weekly market in Carouge, on

the other bank of the Arve. Here you will find fresh fruit, vegetables and flowers from the surrounding region. There is also one in Plainpalais as well as in Rue de Rive that are well known in Geneva.

## Furniture shopping

There are an abundance of places to buy furniture in and around Geneva and Lausanne. Also, many people from Geneva and Lausanne go shopping in France, as it is very close.

## Shopping in Geneva

Rue du Rhône offers many well-known high street brands. Rues Basses do have trendy boutiques and vintage stores.

### Manor

Rue Cornavin 6  
1201 Geneva  
or  
Route de Thonon 40  
1222 Vesenaz

### Globus

Rue du Rhone 48  
1204 Geneva

### Bon Genie Grieder

Rue du Marché 34  
1204 Geneva  
🌐 [bongeniegrieder.ch](http://bongeniegrieder.ch)



MARKETS IN LAUSANNE AND GENEVA.



# Shopping

## Electronics and various appliances

**Fust** (several shops)  
Rue de Rive 3b  
1204 Genève

**Mediamarkt**  
Route des Acacias 43  
1227 Carouge  
Or  
Chemin Riant Bosson 15-21  
1217 Meyrin

**IKEA**  
Route de Vernier 156  
1214 Vernier

**Pfister**  
Chemin Riant Bosson 7  
1217 Meyrin

**Micasa**  
Avenue Vibert 32  
1227 Carouge

## Shopping in Lausanne

**Rue du Bourg**  
Various individual shops

**Globus**  
Rue du Pont 5, 1003 Lausanne

**Manor**  
Rue Pichard 3, 1003 Lausanne

**BG Grieder**  
Place St François 10  
1003 Lausanne

## Electronics and various appliances

**Fust** (several addresses in Lausanne)  
Place Centrale 1, 1003 Lausanne

**Mediamarkt**  
Rue de Morges 13, 1023 Crissier

**Outside Lausanne**  
Around 15 min. drive – furniture etc.

**IKEA** in Aubonne  
Le Pré Neu, 1170 Aubonne  
ikea.com/ch/fr/stores/aubonne

**Outlet Aubonne**  
Chemin, Pré-Neuf 14  
1170 Aubonne  
outlet-aubonne.ch

**Pfister** in Etoy  
Centre de l’Habitat, Route de  
l’Industrie 10  
1163 Etoy  
pfister.ch/de/filialen/etoy

**Micasa** in Etoy  
Route de Noyer-Girod 3, 1163 Etoy  
micasa.ch

**Hornbach** in Etoy  
Route de l’Industrie 6  
1163 Etoy  
hornbach.ch/mon-magasin/  
magasin-de-bricolage-etoy-vd

**Casa** in Etoy  
Route de Buchillon 2  
1163 Etoy  
ch.casashops.com

**Maison du monde** in Etoy  
Route de Noyer-Girod 6  
1163 Etoy  
maisonsdumonde.com/CH/fr/  
magasins/etoy-500



# International Clubs and Societies

Ask your local council for a list of the clubs and societies in your town if you would like to get to know some people either locals or expats. Many clubs of various interest groups can be found in larger cities close by, especially in Geneva and Lausanne. Here are a few of the mains ones.

## International club

**American International Club of Geneva**  
amclub.ch

**American International Women’s Club of Geneva**  
aiwcgeneva.org

**Rotary Club Geneva**  
rc-geneve-international.org

**Rotary Club of Lausanne**  
lausanne-international.rotary1990.ch

**International Women’s Club of Lausanne**  
iwc-lausanne.org

## Know-it-all

English-language guidebook and community website for Geneva, Vaud and neighbouring France featuring local information, events and various activities. It has become THE reference book for anything you want to know from shopping, housing, and education to birthday party venues to cheese and chocolate! It includes pages of information on winter activities, public transport info, rules and regulations, and much more...  
knowitall.ch

## Other useful internet sites for information, chats and outings

**Meet Geneva’s international expatriate community**  
internations.org

**Business directory**  
expat.com  
englishforum.ch  
xpatxchange.ch  
swissworld.org

**Facebook groups**  
Geneva Expats  
Lausanne /Vaud Expats



# Places of Interest

## Introduction

Lausanne and Geneva offers a wide variety of leisure activities for beautiful sunny as well as rainy days. There are also many options for winter activities, such as skiing, snowshoe walking and much more. As France is so close from Geneva or Lausanne, you can also plan a day trip abroad.



## Places of interest in and around Geneva (France)

### Annecy

Considered as the Venice of the Alps.

- 🌐 en.lac-annecy.com
- 🌐 tourisme-annecy.net
- 🌐 lac-annecy.com

### Yvoire

Medieval village in front of Nyon alongside Lake Leman.

- 🌐 yvoire-france.com

### Chamonix

Summer/winter resort on the foot of Mont Blanc, highest peak of Europe.

- 🌐 chamonix.com
- 🌐 chamonix.net

### Megeve

Summer/winter resort facing Mont Blanc.

- 🌐 megeve.com



ANNECY



CHAMONIX  
MONT BLANC



BOURG MÉDIÉVAL  
D'YVOIRE LA CÔTE

## Museum

### Museum of Ethnography of Geneva

The MEG is home to one of the finest collections of ethnography in Switzerland.

- 🌐 ville-ge.ch

### CERN

European Nuclear Research operates the largest particle physics laboratory in the world.

- 🌐 visit.cern/tours

### Museum of Natural History

This is a great museum for both adults and children to see almost all kinds of stuffed animals, human/animal replicas, jewel stones and other neat exhibitions.

- 🌐 institutions.ville-geneve.ch

### Mamco Museum of modern art

- 🌐 mamco.ch

## Kids

### Le Bois-De-La-Bâtie

Park with a big playground, paddling pool, free mini-zoo.

- 🌐 geneve.ch/fr/bois-batie

### Conservatoire et Jardin Botanique

The botanical gardens are filled with birds, animals and picturesque gardens.

- 🌐 ville-ge.ch/cjb/

## Yatouland

Features bouncy castles, a soft play area for toddlers 0–3 years, trampolines and laser tag for older children.

- 🌐 yatouland.com

## Places of interest in and around Lausanne

### Maison Cailler

Visit the Cailler factory to see how their chocolate is made and to enjoy some samples.

- 🌐 cailler.ch/en/maison-cailler

### Fondation de l'Hermitage

- 🌐 fondation-hermitage.ch

**Castle of Chillon:** most famous castle along side Lake Leman.

- 🌐 chillon.ch

### Montreux

World most famous jazz summer festival.

- 🌐 montreuxjazzfestival.com

### Evian – France

25 min by boat in front of Lausanne in France Thermal town with its famous water.

- 🌐 tourism.evian-tourisme.com

## Museum

### Aquatis

Europe's biggest pure water aquarium. "Aquatis".

- 🌐 aquatis.ch

## International Olympic museum in Ouchy

- 🌐 olympic.org/museum

### Chaplin's world in Vevey

Paying tribute to Charlie Chaplin's life: experience the museum.

- 🌐 chaplinsworld.ch

### Nestlé's food "alimentarium"

World first food museum

- 🌐 alimentarium.org

## Kids

### Aquaparc

Biggest indoor/outdoor water park in the French part of Switzerland.

- 🌐 aquaparc.ch

### Bouveret

Small steam train park.

- 🌐 swissvapeur.ch

### Zoo in Servion (FR)

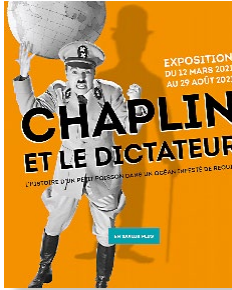
The Zoo in Servion (FR) is a fascinating place for both children and adults. It is located just outside Lausanne on the edge of the Jorat forest.

- 🌐 zoo-servion.ch

### Espace Junior

Bouncy castles, electric cars, trampolines etc.

- 🌐 region-du-leman.ch/en/P19936/kids-zone



CHÂTEAU DE CHILLON









FEELING AT HOME  
IN GENEVA



FEELING AT HOME  
IN LAUSANNE

## Prime Relocation GmbH

Industriestrasse 47  
CH-6300 Zug  
Switzerland

T +41 41 760 74 41  
[info@primerelocation.ch](mailto:info@primerelocation.ch)  
[www.primerelocation.ch](http://www.primerelocation.ch)



PROUD HOLDER OF THE  
EURA QUALITY SEAL PLUS  
SINCE 2016



FULL MEMBER OF EURA,  
THE EUROPEAN RELOCATION  
ASSOCIATION